



**LemTechnologies®**

AUTOMATION THRIVED BY KNOW-HOW

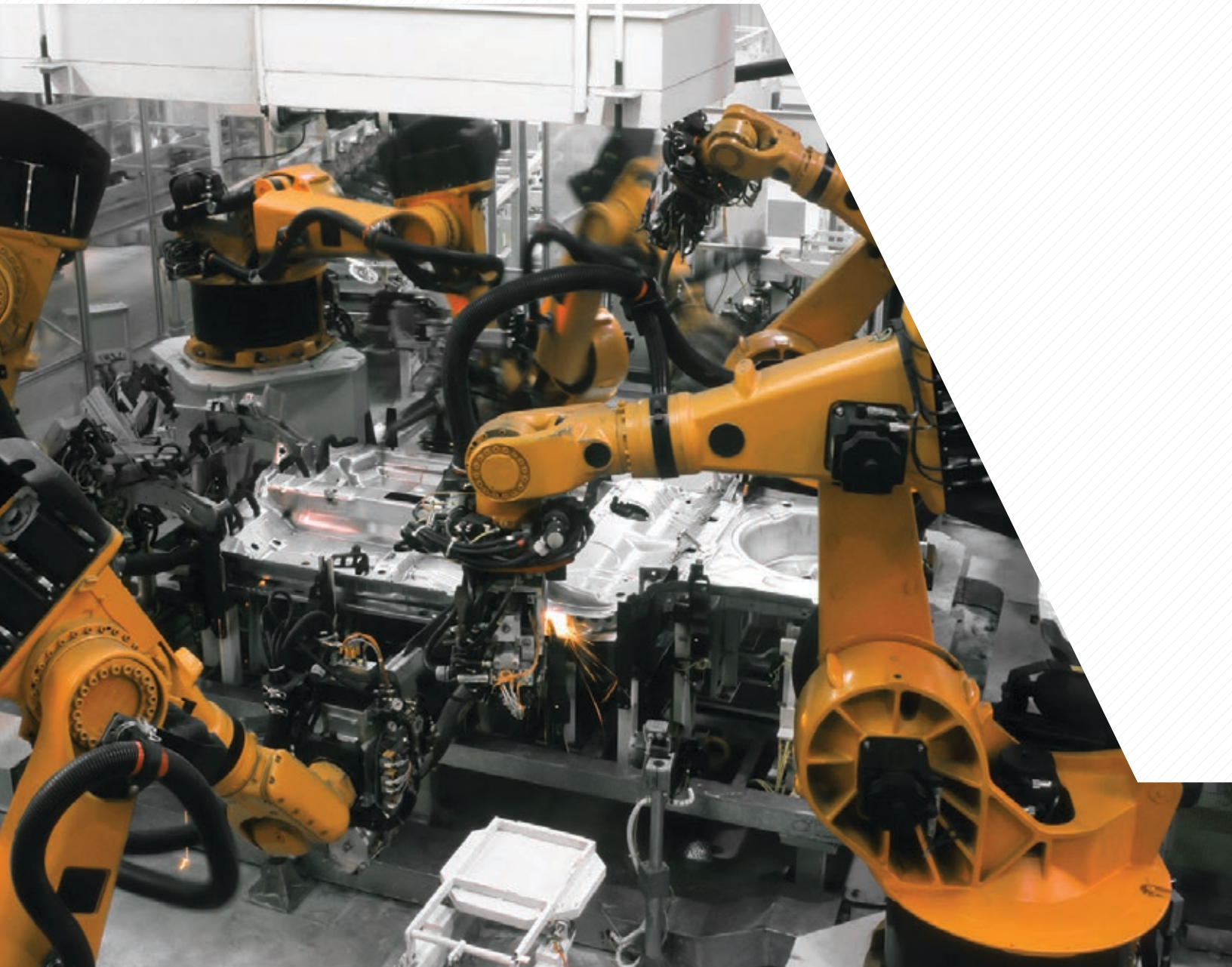
Proven  
*Ingenuity*



Our mission is to make North American and European industrial automation and control systems more reliable, efficient and 100% compliant through our innovative expertise in project engineering and custom manufacturing.

## Discover *LEM intelligence*

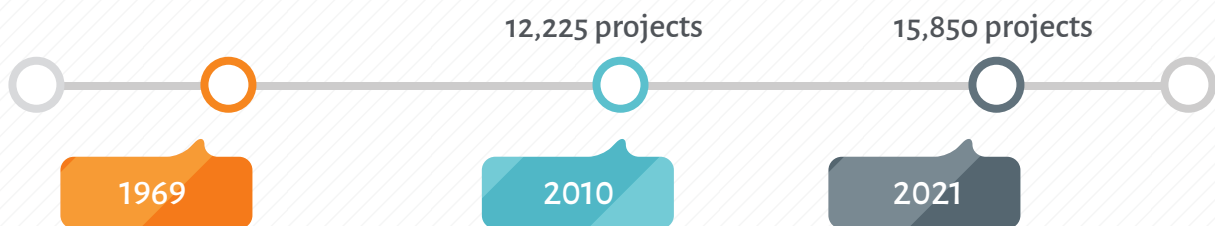
We are an industry leader in automation systems, a proud partner of companies in the manufacturing, agri-food industry, aerospace, industrial, metallurgy and distribution center sectors. Our advanced expertise and strength in integration are recognized and sought after. Our consistent and reliable solutions improve overall performance and efficiency of your operations, by providing a solid framework of stability.





Automation | Control systems | PLCs  
Human-machine interface | Manufacture of control panels  
Electrical installation | SCADA

- Preliminary analysis and estimate
- Hardware and software engineering
- Programming (PLC, HMI, SCADA, web link)
- Servo motor motion control
- Industrial data (databases, MES, MRP)
- Production management
- Risk analysis and machine safety
- Communication networks (Ethernet TCP / IP, OPC Server, Modbus, DeviceNet, Profibus / Profinet)
- Conception, design and manufacture of control panels
- Instrumentation and controls
- Industrial electrical installation



Since its inception in 1969, LEM Technologies has completed more than 15,850 projects

# WHY CHOOSE LEM TECHNOLOGIES?

OUTSTANDING EXPERTISE  
INTEGRATION STRENGTH  
PROVEN LOGISTICS  
RELIABILITY

Visit [www.lemtechnologies.com](http://www.lemtechnologies.com)  
Discover how LEM's intelligence  
guided their projects

*Actisol*

**BOMBARDIER**

*Saputo*

**Kraft**



5N PLUS



**Pratt & Whitney Canada**  
Une société de United Technologies

**Bell**



**LafargeHolcim**

SYSTÈMES  
**BMH**



**Ventilex**

**ALSTOM**

MAISON DES  
DEPUIS 1922  
**FUTAILLES**  
*Vins et Spiritueux*

**BOULART.**

**stm**

  
**SOLENO**  
Mastering Storm Water



## Exceptional *expertise*

LEM intelligence: Our know-how

### COMPLETE CUSTOM SOLUTIONS

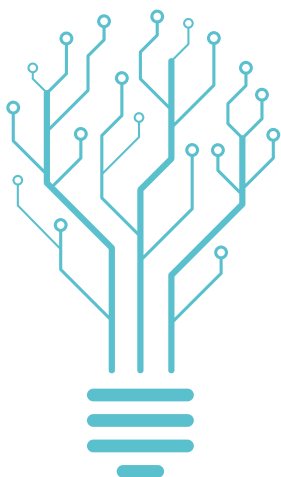
**We ensure the synergy of your systems**

- Comprehensive approach and complete analysis of your infrastructure and components to harmonize all plant hardware and software.
- Development of automation systems to ensure efficient and reliable production lines and equipment.

### SPECIALISTS IN COMPLEX SYSTEMS & COMPLIANCE WITH UL, CSA, CE

**We take on complex projects**

- High-level expertise in advanced systems integration.
- Our detailed knowledge of manufacturers allows us to offer the most suitable components to meet your specific needs.
- Several European OEMs look to us to design and manufacture their control panels to North American standards, and then facilitate the importation of their equipment to Canada and the U.S.



### RISK MANAGEMENT & EQUIPMENT SECURITY

**We secure your machines to protect your teams**

- Analysis and risk reduction measures related to production and compliance with current standards.
- Audit of equipment fleet and processes, to ensure that compliance solutions are adapted to the reality of your operations.
- Close collaboration with and support of your operations team.



## Superior *implementation support*

LEM intelligence: Our experience

### TURNKEY PROJECTS

*We lead your automation project via comprehensive service*

- Audit, analysis, needs identification, functional definition, diagnosis, design and engineering, manufacturing of control panels, testing, programming, electrical installation, commissioning, training and strict quality control.

### PERFORMANCE MONITORING

*We understand your profitability and efficiency challenges*

- Improving operational efficiency.
- Identifying opportunities to optimize the quality/cost/time relationship.
- Reduced downtime on lines while we reengineer to minimize financial impact.



Our team possesses more than 170 years of combined expertise

### PROVEN EXECUTION

*We outperform*

- 100% compliant and functional systems integration.
- 15 experts, engineers and experienced technologists who share a work ethic and commitment to quality standards.
- Combined professional experience of more than 170 years.
- More than 15,850 completed projects.



## Logical structures & *complete reliability*

LEM intelligence: Our quality promise

### STRUCTURED APPROACH AND METHODOLOGY

*We help you avoid pitfalls*

- Deep analysis and testing to detect any problems before implementation.
- Logical solutions that operate flawlessly.
- Enable self-management of systems.

### DYNAMIC SUPPORT AND TRAINING

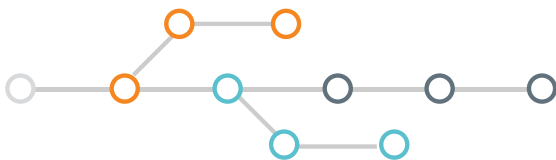
*We work with you seamlessly*

- Consult with and involve you at every stage of the project, including during critical implementation phases.
- Activation of systems is closely supervised by our professionals to ensure flawless execution.
- Training of your staff on security, operating procedures, control and ongoing maintenance.

### FACILITIES MAINTENANCE

*We stay with you*

- Provide detailed plans and clear operation guides for your automation processes and systems, to augment your team's understanding and ability to maintain your systems.
- Comprehensive knowledge sharing and ongoing support.
- Optional 24/7 remote technical support.



# LEM intelligence:

Fits your needs and business reality

- Optimal, customized solutions
- Measurable efficiency and financial gains
- Improved productivity
- Compliance with budget and timelines
- Well documented, structured and logical solutions
- Training of your teams and simplified ongoing maintenance
- Warranty and ISO certification
- Close collaboration with clients.



**LemTechnologies®**  
AUTOMATION THRIVED BY KNOW-HOW

514.875.6690

[www.lemtechnologies.com](http://www.lemtechnologies.com)

715 Delage St., suite 900  
Longueuil (Québec) J4G 2P8 CANADA



CSA C22.2 Industrial Control Equipment  
CSA B44.1 Elevator and Escalator Electrical Equipment  
UL 508A Industrial Control Panels  
ASME A17.5 Elevator and Escalator Electrical Equipment  
ASME A17.1 Safety Code for Elevators and Escalators-Includes



Régie  
du bâtiment  
Québec



Corporation  
des maîtres électriciens  
du Québec

